



Competitor Information

KTS Winter Series Arena Trec

Welcome to Shuttleworth College

Travelling to Shuttleworth College

Address

Shuttleworth College
Old Warden
Bedfordshire
SG18 9HF (nearest postcode)

Directions

From the A1

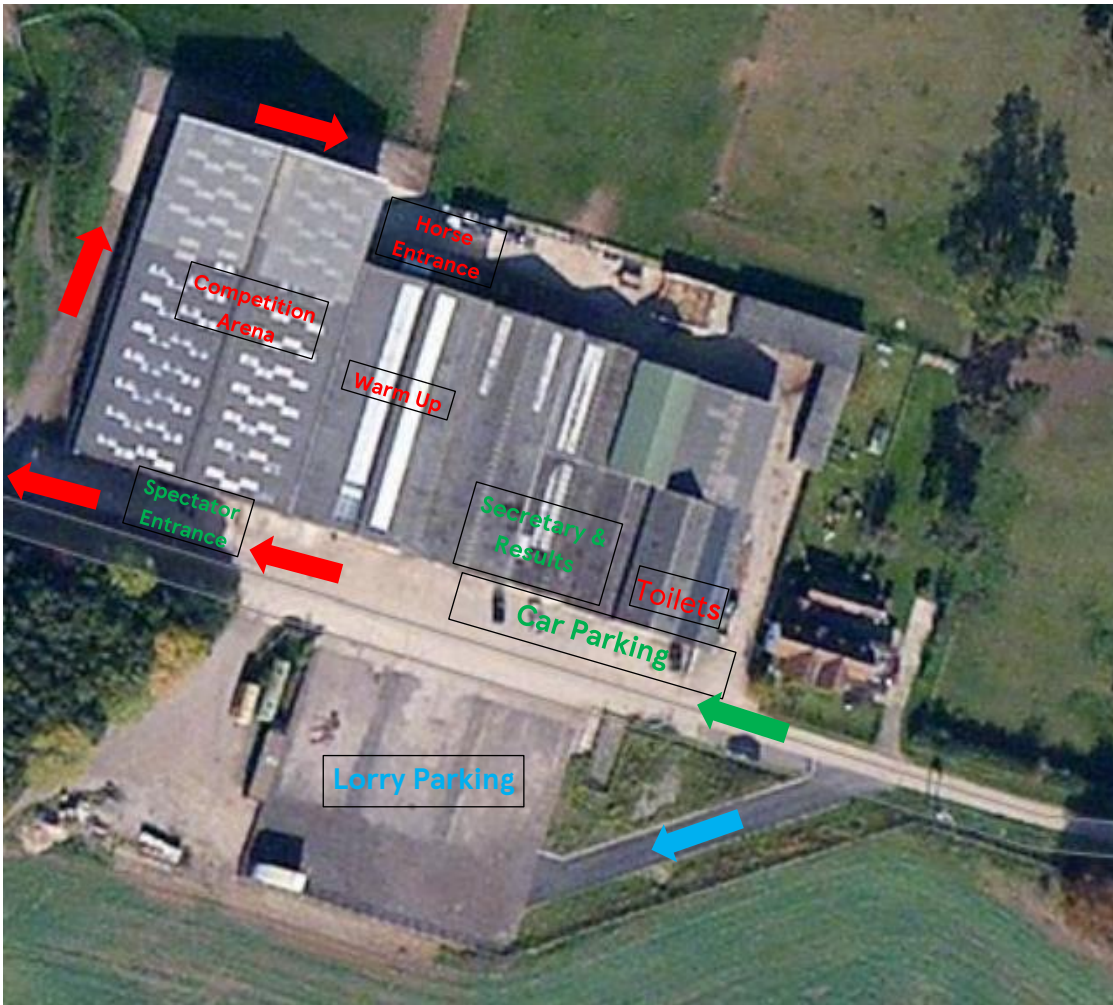
Exit at Biggleswade North – Sainsbury's roundabout heading towards Shuttleworth & Old Warden on Hill Lane. Straight at 1st roundabout. Continue on Hill Lane the venue is on the right on a sharp bend before the village of Old Warden.

Please park lorries and trailers in the Lorry Park (see site plan). Please park tightly as space is limited.

Cars to be parked in the car parking area only.



Shuttleworth College Site Plan



Thank you for entering the KTS Winter Series we hope you have an enjoyable day at Shuttleworth College.

We have a packed day please help us keep to time by being ready at your start time & report to the secretary on arrival, **please bring your passport and TrecGB membership number**. If you are unable to attend the event please call the contact number below. There is a small indoor warm up area as marked on the site plan. Follow the red arrows to access the arena. Please ride with care and consideration to other competitors. You can find competitor lists and course plans on the wall in the warm up arena.

There will be a guided course walk before the Newcomers class starts. All other courses can be walked briefly before the class starts.

Results and prizes will be available shortly after the class has finished and can be collected from the secretary's office.

Safety – Horses to be walked in all areas except the indoor arenas. Please be careful of pedestrians, dogs **MUST** be kept on a lead. Please keep the venue tidy by cleaning up droppings and hay. Shuttleworth is a working yard please respect the residents.

Food & Drink – There will be tea, coffee, hot chocolate & cake, soup & rolls available on the day first come first served basis.

Toilets – These are marked on the site plan and accessed at the front of the building then turn right.

Contact Number – Angela Hughes 07841 687808

Trec GB Winter Series 2019 –2020

Arena TREC focuses on the MA (Control of Paces) and PTV (Obstacle course) phases of TREC and events are usually run in an indoor or outdoor school.

The PTV is shortened to 10 obstacles and there are a variety of classes to suit all horses and riders.

MA (CoP) scores – After the success of last season the MA scores will continue to be reduced 50%. We feel it more accurately reflects the balance between the two phases of the competition. It was thought that a straight 50% reduction would be preferable to a more accurate reduction as it was easier for organisers to calculate and riders can instantly see what they would have scored if it had been a full TREC competition.

Competitors are expected to present themselves and their horse in a clean and tidy state, with all tack and equipment in a serviceable condition.

<https://www.trecgb.com/documents/5theditionRulebook1Feb2019-2192.pdf>

Newcomer. Open to RIDERS not to have been placed 1st in two or more Winter League classes prior to 1st October 2019. PTV obstacles equivalent to Level 1.

Novice Horse. Open to HORSES who have not been placed 1st in two or more Winter League classes prior to 1st October 2019.

PTV obstacles equivalent to Level 1

Intermediate. Horse and rider combination not to have been placed 1st in **three** or more Intermediate classes, or to have won **twice** in the Open class at WINTER TREC competitions prior to 1st October 2019.

PTV obstacles equivalent to Level 2/3

Open Intermediate – Open to all horses and riders. The course will be of the same standard as INTERMEDIATE.

PTV obstacles equivalent to Level 2/3

Open league classes. Open to all horses and riders.

PTV obstacles equivalent to Level 3/4

All classes are open to Members and Non Members for TREC GB – only paid up members will have their scores counted towards TREC GB Winter Leagues and be eligible for a special award.

The Winter League will include results from all TREC GB Arena TREC competitions held in from 1st October 2019 to 31st March 2020. Open, Intermediate, Intermediate Open, Newcomer and Novice Horse classes. Points will be awarded for placings (1st = 10 points, 2nd = 9 points, etc) and the best 4 placings for each horse and rider combination will be used to calculate the League standings. Riders who are not members of TREC GB can join on the day (before or after their class) in order for their performance at that event to count. In special circumstances competitions outwith these dates may be considered to count for the league by special permission from the Winter series working group.

The highest four scores will be counted for the league. In the event of equal positions after 4 events the position at a fifth event will be taken into account. If still equal the TOTAL actual PTV scores (from 4 events) will be taken into account.

Non League Class (Pairs)

The pairs classes in non league – the first rider completes the MA Canter only then completes the first half of the obstacles hands over to their pair to finish the course and the MA walk.

You can enter this class twice on the same horse providing you change the section of the course that you ride.

KTS – will run a winter league in addition to the TrecGB league and results from our 4 winter series competitions count to the totals. This will include all our classes.

Good Luck